

Data in Europe: Poverty

Webinar, Tuesday 13 November 2018, 15:00-16:00 CET



*Jen Buckley,
UK Data
Service*



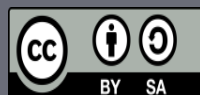
*Emilio De Meglio,
Eurostat*



*Professor Christos Papatheodorou,
Panteion University of Social and
Political Sciences, Athens*

 cessda.eu

 @CESSDA_Data



Can you hear us?

◆ If not:

- Check your volume and that your speaker/headset is plugged in
- Click on audio to change to listening via phone
- We are recording this webinar – we plan to put it on our website

Overview

- ◆ Introduction: CESSDA, key sources of data on poverty and finding and accessing data in Europe (Jen Buckley, UK Data Service)
- ◆ Microdata from Eurostat (Emilio De Meglio, Eurostat)
- ◆ Potential and challenges of working with data relating to poverty (Professor Christos Papatheodorou (Panteion University of Social and Political Sciences, Athens))
- ◆ Questions and answers
 - ◆ type questions into question box in the webinar control panel
- ◆ Resources: Slides and guide available at the end/Recording via CESSDA website (cessda.eu)

Consortium of European Social Science Data Archives
www.cessda.eu/About

“enable the research community to conduct high-quality research”

- Developing standards and best practices
- Facilitating access to important data resources
- Training

CESSDA
About

European social science data archives



SND Swedish National Data Service



NSD NORWEGIAN CENTRE FOR RESEARCH DATA



YHTEISKUNTATIETEELLINEN
TIETOARKISTO
FINLANDS
SAMHÄLLSVETENSKAPLIGA
DATAARKIV
FINNISH SOCIAL
SCIENCE DATA ARCHIVE

gesis

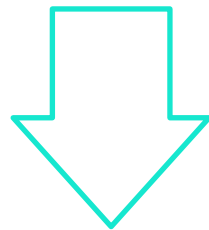
Leibniz Institute
for the Social Sciences

Data collections can include:

- Quantitative ⇒ major source of individual level data
- Qualitative data (some archives)
- outputs of
 - government/policy-focused research
 - major academic projects
 - small research teams
 - individual researchers
- recent and less recent data

National and cross-national statistics

Poverty is important in the policy context



Statistics and reports from

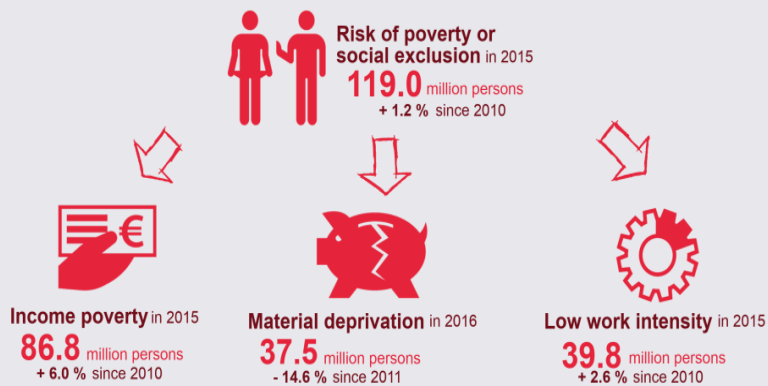
- **statistics institutes and offices**
- **governing bodies**
- **intergovernmental organization**



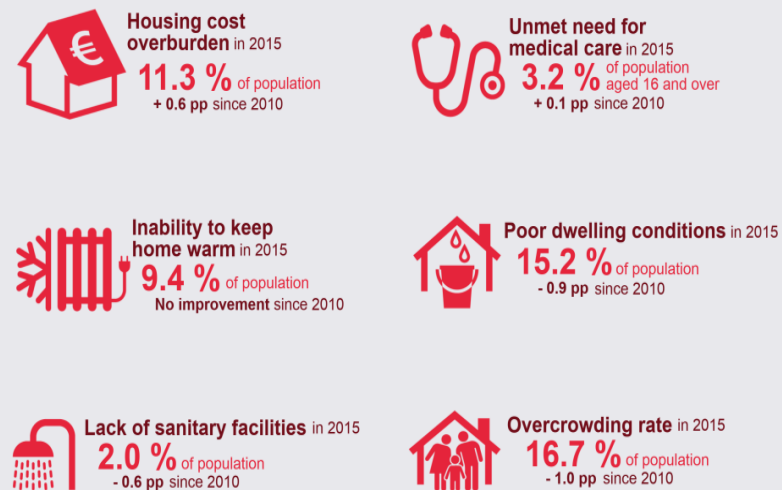
Eurostat

Poverty in the EU

Multidimensional poverty



Basic needs



Source: Eurostat (online data codes: sdg_01_10, sdg_01_20, sdg_01_30, sdg_01_40, sdg_01_50, sdg_01_60, sdg_03_60, sdg_06_10, sdg_07_60 and sdg_11_20)

<https://ec.europa.eu/eurostat/web/income-and-living-conditions/data>

- tables
- multi-dimensional datasets

Statistics Explained

- https://ec.europa.eu/eurostat/statistics-explained/index.php?title=Income_poverty_statistics
- https://ec.europa.eu/eurostat/statistics-explained/index.php/Europe_2020_indicators_-_poverty_and_social_exclusion

National Statistics Institutes

E.g. UK Office for National Statistics (ONS) or Statistics Netherlands (CBS)

- collect data relating to poverty such as income, receipt of benefits and expenditure.
- publish reports and statistics
- cross-over with Eurostat's EU-SILC

The image displays two screenshots of national statistics websites. The top screenshot is from the CBS website (https://www.cbs.nl/en-gb/background/2014/13/income-data-employed-living-on-long-term-low-incomes-characteristics-and-explanations--dutch-only--). It features a navigation menu with categories like 'Labour and income', 'Economy', 'Society', 'Regional', 'Corporate', and 'Figures'. A main article titled 'Income data employed living on long-term low incomes; characteristics and explanations (Dutch only)' is highlighted, dated 28/03/2014 09:30. A 'Share this page' button and social media icons are visible. A 'Read more' button lists related topics: labour market, poverty, low incomes, employment, and incomes. A 'More news' section shows a thumbnail for 'Investments over 6 percent up in June yesterday 15:00'.

The bottom screenshot is from the Office for National Statistics website. It shows a navigation menu with categories like 'Home', 'Business, industry and trade', 'Economy', 'Employment and labour market', 'People, population and community', and 'Taking part in a survey?'. A search bar is present. The main content area displays the dataset 'Persistent Poverty in the UK and EU'. Below the dataset name, there is a table with the following information:

Contact	Release date	Next release
Dominic Webber / Callum Clark	27 June 2017	To be announced

Additional options include 'View all data related to Income and wealth', 'About this dataset' (with a brief description: 'Rates of poverty and persistent poverty in 2015 are included for the UK and EU, including characteristics, measures of material deprivation and well-being.'), and 'Your download options'.

The UK Data Service makes use of browser cookies.

By continuing to use this website you are agreeing to our use of cookies. [Tell me more](#)



International data

International Organisations	National Statistics Institutes	Africa	Americas	Asia and Oceania
Europe				

[LOGIN](#) / [REGISTER](#)
 DISCOVER UK DATA SERVICE

 Data Website

QUICK ACCESS TO

[Access data via UKDS.Stat](#)

SHARE

A comprehensive list of national statistics institutes in alphabetical country order. These sites are most useful for individual country information for example on the economy, population and society at national and local level.

- Algeria: [National Office of Statistics](#)
- Argentina: [National Institute of Statistics and Censuses](#)
- Armenia: [National Statistical Service](#)
- Aruba: [Central Bureau of Statistics](#)
- Australia: [Australian Bureau of Statistics](#)
- Austria: [Statistics Austria](#)
- Azerbaijan: [State Statistical Committee](#)
- Bangladesh: [Bureau of Statistics](#)
- Barbados: [Barbados Government Information Services](#)
- Belarus: [National Statistical Committee](#)
- Belgium: [Statistics Belgium](#)
- Bolivia: [Instituto Nacional de Estadística](#)
- Botswana: [Central Statistics Office](#)
- Brazil: [Instituto Brasileiro de Geografia e Estatística](#)
- Bulgaria: [National Statistical Institute](#)
- Cambodia: [National Institute of Statistics](#)

- About our data
- Key data
- Data by theme
- Data by geography
- Open data
- How to access

Other providers

- Ready-made UK statistics
- International data
- Qualitative data
- Data archives
- Open data
- Secure datalabs
- Question banks

Explore online

[Data access policy](#)

[Thesauri](#)

OECD – another source of macro data

The screenshot shows the OECD Data website search results for the term "poverty". The browser address bar shows the URL <https://data.oecd.org/searchresults/?q=poverty>. The page header includes the OECD logo and navigation tabs for "Data", "Publications", and "More sites". The search bar contains the text "poverty" and a "Search tips" link.

Below the search bar, the page is titled "OECD Data > Search Results". On the left side, there are two filter sections:

- Filter by type**
 - Indicators
 - Databases
 - API Access
 - Publications
- Filter by topic**
 - Agriculture
 - Development
 - Economy
 - Education
 - Energy

On the right side, the search results are displayed under the heading "Showing 185 results for 'poverty'". The results are listed as follows:

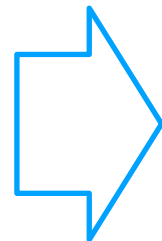
- Poverty gap** (INDICATOR in Inequality)
- Poverty rate** (INDICATOR in Inequality)
- Food aid** (INDICATOR in Official development assistance (ODA))
- Youth not in employment, education or training (NEET)** (INDICATOR in Youth and the labour market)
- Income distribution** (DATABASE in OECD Social and Welfare Statistics)
- Taxes and benefits - indicators**

Microdata

Statistics
/macrodata



Individual
level data
from
surveys



Access to
microdata for
research

- Eurostat: EU-Statistics on Income and Living Conditions (EU-SILC)
- UK Office for National Statistics: Family resources survey (UK): Feeds into EU-SILC
- Eurofound: European Quality of Life Surveys (EQLS)
 - Life circumstances
 - Perceptions of life circumstances
- Household panel studies: German Socio-Economic Panel (SOEP), Understanding Society and Swiss Household Panel (SHP)

- Direct from national statistics institute or research institute
- Via data archive or repository

You are here: Home

Welcome to MISSY

MISSY (**Microdata Information System**) is an online service platform that provides structured metadata for official statistics. MISSY includes metadata at the study and variable level as well as reports and tools for data handling and analysis. All documentation in MISSY refers to microdata available for scientific purposes. MISSY currently documents the following official statistics microdata:

EU-Data

- [AES](#) (Adult Education Survey)
- [CIS](#) (Community Innovation Survey)
- [EU-LFS](#) (European Union Labour Force Survey)
- [EU-SILC](#) (European Union Statistics on Income and Living Conditions)
- [SES](#) (Structure of Earnings Survey)

National Data

- [MZ](#) (German microcensus)

Please note:

- Series and studies for FINLAND ✕
- Adult Education Survey (AES)
- Business Register
- Causes of death
- Consumer survey
- Dwellings and housing conditions
- Educational structure of population
- Employment
- Entrance to education
- Finnish Labour Force Survey
- Health Expenditure and Financing
- Households' consumption
- Income and living conditions survey
- Income distribution statistics
- Innovation
- Patenting
- Population structure
- Quality of work life survey
- Research and development
- Statistics on business subsidies
- Structure of Earnings Survey (SES)

Factsheet: Accreditation & Data Access Conditions for FINLAND

Contact

Name

Tilastokeskus (Statistics Finland)

Postal Address

FI-00022 Statistics Finland Finland

Contact

General: info@tilastokeskus.fi Researcher services: tutkijapalvelut@stat.fi

Website

[\[click here\]](#)

Conditions

General Conditions

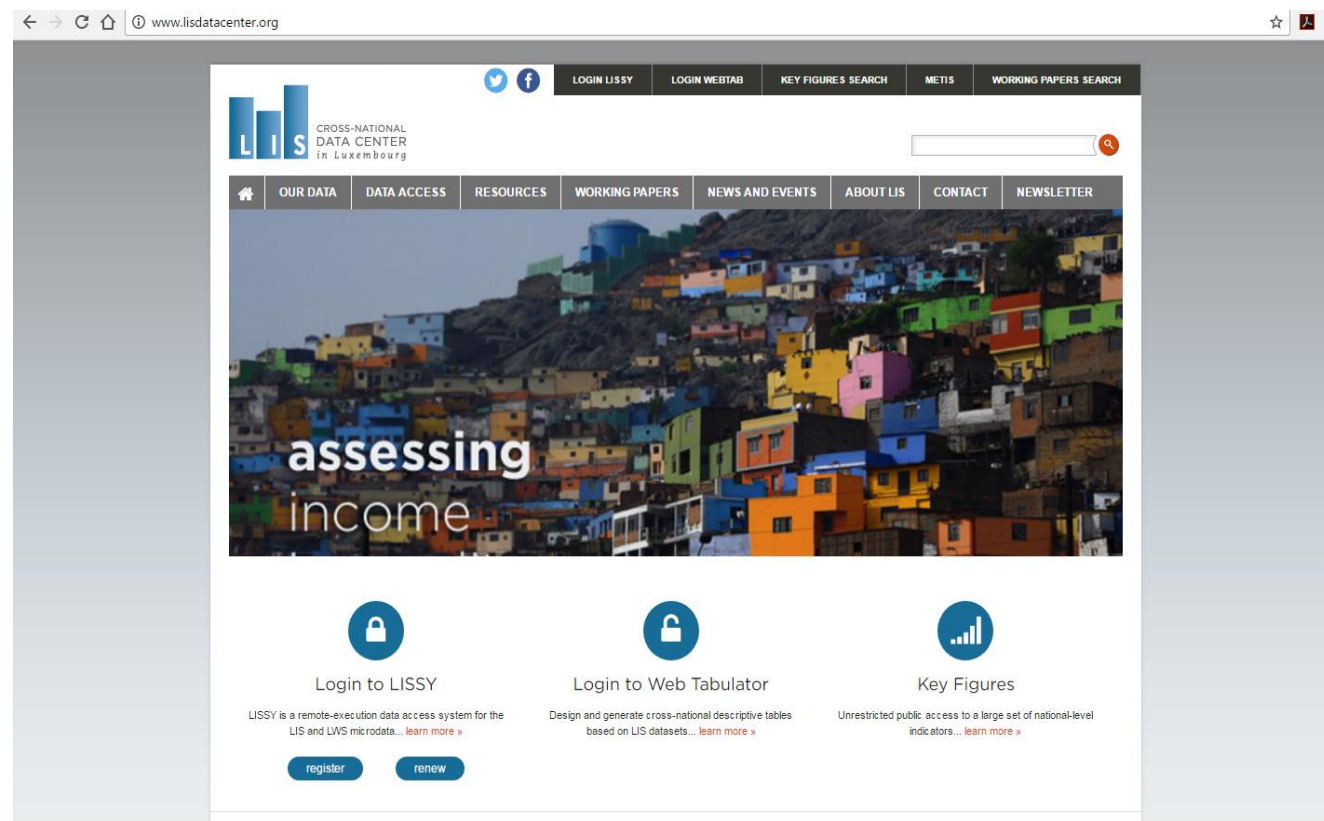
Statistics Finland provides microdata for research use. Data with possibility for indirect identification are available only for secure remote access or use at the onsite safe centre (Research Laboratory). Release of data outside Statistics Finland (often, tailor-made extractions of samples from existing data) is possible only for data protected against direct and indirect identification. These data are supplied to researchers on CD or DVD or on a memory stick.

The Luxembourg Income Study (LIS)

harmonised socio-economic micro datasets

- Luxembourg Income Study Database (LIS)
- Luxembourg Wealth Study Database (LWS)

www.lisdatacenter.org/



Academic research archived in social science data archives

Poverty in the United Kingdom: A Survey of Household Resources and Standards of Living, 1967-1969

- seminal research into poverty by Peter Townsend
- original research data available via the UK Data Service (Study number:).



'Everyday Experiences of Poverty'

- Writing competition from 2006, 800+ submissions archived (Study number FSD2413)
- Selected participants followed up in 2012 (Study number FSD2795)
- Can link participants from 2006 ad 2012
- (dataset in Finnish)



General social surveys

Often ask about

- personal living conditions and social exclusion
- satisfaction about financial situation
- attitudes towards welfare state and social benefits
- attitudes towards income inequalities
- perceptions of poverty (extent, causes, consequences)

Cross-national



National

- Germany: Allbus
- Sweden: SOM
- Britain: British Social Attitudes (BSA)



Home » Data and Documentation » by theme

Modules/Themes

- Media and social trust
- Politics
- Subjective well-being, social exclusion, religion, national and ethnic identity
- Gender, Year of birth and Household grid
- Socio demographics
- Human values
- Immigration
- Citizen involvement
- Health and care seeking
- Economic morality
- Family work and well-being
- Timing of life
- Personal and social well-being
- Welfare attitudes
- Ageism
- Justice
- Democracy
- Social inequalities in health
- Public attitudes to climate change

Politics (Core - all rounds)

The politics questions of the core section focus on political interest, trust, electoral and other forms of participation, party allegiance as well as socio-political orientations.

Related documents

- ESS Core Questionnaire Development - Political Issues
- ESS Core Questionnaire Development - Shifts in Governance
- ESS Core Questionnaire Development - Socio-Political Orientations

Data/Variables - Round 7 (2014)

- 📌 How interested in politics
- 📌 Political system allows people to have a say in what government does
- 📌 Able to take active role in political group
- 📌 Political system allows people to have influence on politics
- 📌 Confident in own ability to participate in politics
- 📌 Politicians care what people think
- 📌 Easy to take part in politics
- 📌 Trust in country's parliament
- 📌 Trust in the legal system
- 📌 Trust in the police
- 📌 Trust in politicians
- 📌 Trust in political parties
- 📌 Trust in the European Parliament
- 📌 Trust in the United Nations
- 📌 Voted last national election
- 📌 Party voted for in last national election, Austria



ESS Findings

Findings from the European Social Survey are available in a number of publications. >>

ESS Data Alerts

- ESS7 Error in Dutch education variables (father) - 30/05/17
- ESS7 New edition (2.1) of ESS7 Interviewer's questionnaire data - 09/03/17
- ESS7 Error in Design and Post-stratification weights for Spain - 23/01/17
- ESS7 Missing data for SUPQDD for United Kingdom - 21/12/16

Questions?

Questions regarding data or documentation, please contact essdatasupport@nsd.no

Integrated File - Download

- Download ESS Round 7 (2014)
- Download ESS Round 6 (2012)



International Social Survey Programme

Suche

Home ▾ Modules ▾ Search and Data Access ▾

Sie sind hier: [ISSP](#) > [Home](#)



The International Social Survey Programme (ISSP) is a continuous program of cross-national collaboration running annual surveys on topics important for the social sciences. The program started in 1984 with four founding members - Australia, Germany, Great Britain, and the United States - and has now grown to [about 50 member countries](#) from all over the world. For more details on the ISSP history, please click [here](#).

ISSP News

[ISSP Data on the 'Role of Government' out now!](#)



Data Download

Data Catalogue





Search and find data

Filter

Kind of data

filter AZ 9-0

- Survey data 4
- Administrative data 2
- Administrative data: Clinical... 1
- Administrative data: Local au... 1
- Administrative data: National... 1
- Administrative data: Police r... 1
- Administrative data: School r... 1
- Assessment data 1
- Assessment data: Examination ... 1
- Assessment data: Psychologica... 1

Show more

Subject

poverty

Search



Active filters

Survey data

4 hits

[Standard of living in Sweden 1992](#)

Umeå University

This survey deals with the amount of material standard people consider as necessary, and to what extent the respondent lacks these necessities. The questionnaire was divided into following main topics: Household composi...

- Björn Halleröd, University of Gothenburg, Department of Sociology and Work Science
- Staffan Marklund, Umeå University, Department of Sociology
- Anders Nordlund, Umeå University, Department of Sociology
- Mikael Stattin, Umeå University, Department of Sociology

Published: 1995

1C

[QoG Basic](#)

University of Gothenburg

The QoG Institute is an independent research institute within the Department of Political Science at the University of Gothenburg. Overall 30 researchers conduct and promote research on the causes, consequences and natur...

an Teorell, Lund University, Department of Political Science



poverty

535 results found in 11ms

Advanced search Reset filters Clear search

- Topic
- Collection years
- Country
- Publisher
- Language of data files

Results per page: 30 Sort by: Relevance

1 2 3 4 ...

Rhenish Underclasses from 1794 to 1814

Finzsch, Norbert (Anglo-Amerikanische Abteilung, Universität zu Köln); Deutsches Historisches Institut, Washington D.C., USA

Content analytical evaluation of the so-called 'poverty certificates' in view of the social and economic situation of the 'Hausarmen' in Cologne during the time of the French occupation (1798 to 1808) and the evaluation of this situation by the responsible authorities. Topics: Topographic distribution of the Hausarmut, marital status and living conditions of Hausarmen, causes of the poverty, reasons for being needy, amount and type of support, justification of poverty, perception of p...

Poverty and Social Exclusion in the United Kingdom: Qualitative Research Phase 1: Focus Groups, 2010

Gordon, D., University of Bristol

Abstract copyright UK Data Service and data collection copyright owner.The Poverty and Social Exclusion in the United Kingdom project is the largest research project of its kind ever carried out in the UK. It examines levels of deprivation in the UK today. The research aims to answer the following questions:What are the best methods for measuring poverty, deprivation, social exclusion and standard of living?How are the different dimensions of poverty, deprivation and social exclusion related?...



Consortium of European Social Science Data Archives

Data Catalogue

The CESSDA Data Catalogue contains the metadata of all data in the holdings of CESSDA's service providers. It is a one-stop-shop for search and discovery, enabling effective access to European social science research data.



Data Management Expert Guide

This guide is designed by European experts to help social science researchers make their research data findable, accessible, interoperable and reusable.



Training

The CESSDA Training website provides a collection of resources and events for learning about the management, preservation and distribution of research data.





The CESSDA Consortium

The CESSDA Consortium is currently composed of sixteen member countries and one observer. Several European countries are in the process of becoming a CESSDA member or observer. CESSDA also has partners in a number of countries outside of the consortium.

- About ▾
- Mission & Vision >
- Consortium ▾
- Membership
- CESSDA ERIC
- Main Office >
- Working Groups >
- Projects >
- Governance >
- History >

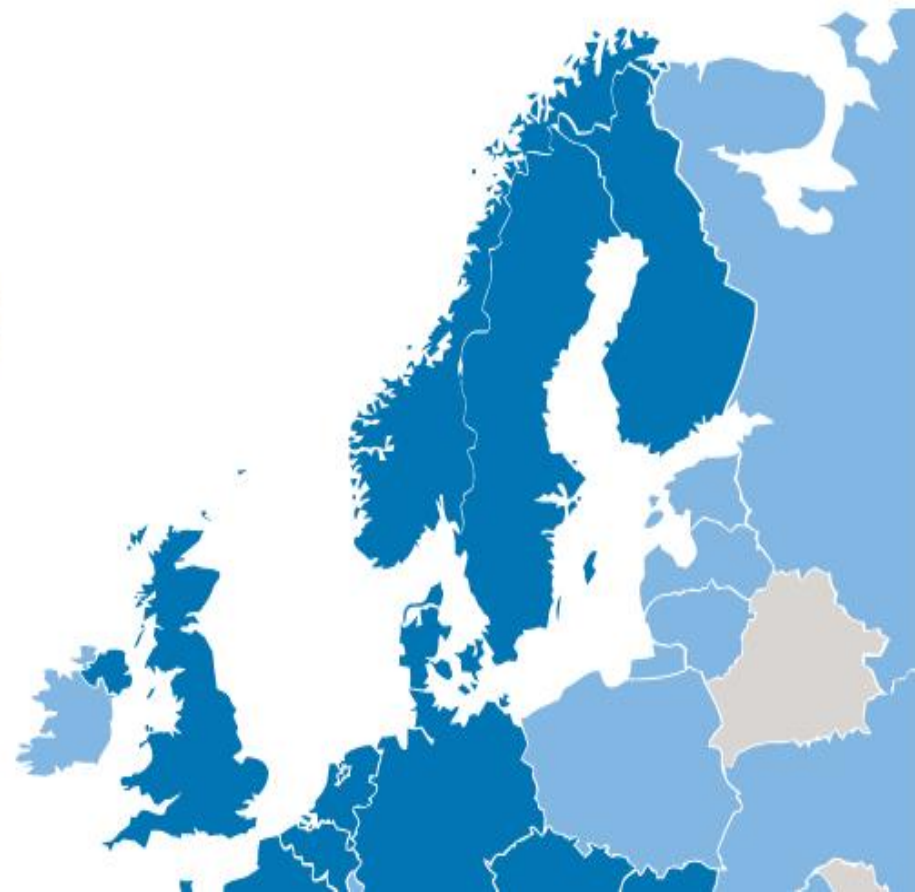
■ Members
■ Partners



CESSDA Countries

Members

Partners



Data access arrangements (1)



Open data

any user, no registering
(acknowledge source)



Registration

- often with institutional user name and password
- may wait for user name or password
- register use of data



Terms and conditions

- not trying to identify individuals, households or organisations
- not distributing data to others
- “data is for non-commercial use only” or for “use in research or teaching” only.



Download

from catalogue (but sometimes complete a request form)

Data access arrangements (2)

- ◇ Permission from the data owners can = a additional stage
- ◇ Sensitive or confidential data = more strict (and lengthy) process
 - ◇ -access may be prohibited for users outside of the country
 - ◇ -dedicated safe rooms or remote safe access service
- ◇ Free (except for commercial use and supplementary services)

Catalogue records and documentation

To find out

- what information was collected?
- from whom?
- when and where?
- what was done to the data?

ZA5250: ALLBUS/GGSS 2016 (Allgemeine Bevölkerungsumfrage der Sozialwissenschaften/German General Social Survey 2016)

Bibliographic Citation | Content | Methodology | **Data & Documents** | Errata & Versions | Publications

Groups

Dataset

Number of Units: 3490

Number of Variables: 793

Analysis System(s): SPSS, Stata

Availability ⓘ A - Data and documents are released for academic research and teaching.

Download of Data and Documents ⓘ All downloads from this catalogue are free of charge. Data-sets available under access categories B and C must be ordered via the shopping cart. Charges apply! Please respect our [Terms of use](#).

↓

Datasets | **Questionnaires** | Codebooks | DDI Documents

↕

• ZA5250_fb.pdf (Questionnaire) 2 MBytes

ZACAT online analysis and search in variable level documentation:
Allgemeine Bevölkerungsumfrage der Sozialwissenschaften ALLBUS 2016

🛒 You can order this study via shopping cart

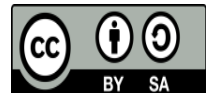
- catalogue entry
- documentation (user guides, survey, questionnaires, interview schedules, fieldwork notes)

...and now **Emilio**



Questions and Answers

Thank you for listening



**Images from CESSDA Training Working Group
(2017). *CESSDA Data Management Expert Guide*.
Bergen, Norway: CESSDA ERIC.**